

travelPaa

(a unit of PANKAJ TRAVELS Corp.)

Address: 2, 1st Floor, Raghshree Market, Ajmeri Gate, Delhi -110006

Contact: +91 (11) 40224949 / +91 9968886111 / +91 9899921532

Email: sales@travelpaa.com



IMagnificent Ladakh (8D/7N)

Rs. 42,000 per person

TOUR PACKAGE →

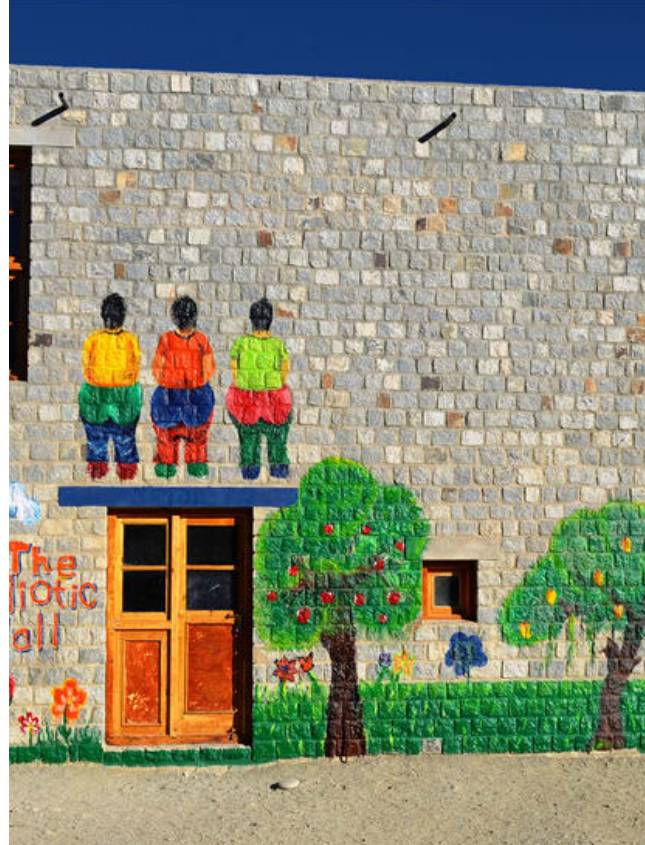
ITINERARY

DAY 1 : Arrival in Leh

When you reach Leh from Delhi, the Swan Tours representative will help you out on your guided transfer to the hotel where you will relax for the rest of the day. Check-in the hotel in Leh and relax for the day at leisure. Stay overnight after having some warm food.

DAY 2 : Leh local sightseeing

Wake up to the morning breakfast, and start with the guided local sightseeing in Leh that includes a lot of amazing spots like, Thiksey monastery, Hemis monastery which is one of the most famous monasteries of the Ladakh region followed Shey Palace and 3 Idiot Fame Rancho School. Post lunch, visit Sankar Gompa, Shanti Stupa and Leh Palace. Post spending the day, return to the hotel and stay overnight!



DAY 3 : Excursion to Alchi (Sham Valley)

In the wake of breakfast, you will be guided on a road trip to the Sham Valley that is exactly 70 km on the west of Leh. Make sure that you pay homage to the Gurudwara Patthar Sahib en-route and then the Magnetic Hill and Hall of Fame. Soon after you reach, you will visit the famous Alchi Village and the popular monastery that was found in the 11th Century that is considered one of the most essential Buddhist centers in Ladakh. Post sightseeing, return to Leh on a drive and stay overnight post dinner!



DAY 4 : Leh to Nubra Valley via Khardung La Pass

Have breakfast early in the morning and start for the Nubra Valley while en-route cover the Khardung La Pass that is known popularly as the highest motorable road in the world that is elevated at a height of 5600 m from where you get a wonderful view. Soon after this, you will check-in the pre-booked hotel in Nubra Valley and stay overnight after visiting the Diskit Monastery.



DAY 5 : Nubra valley to Leh

In the wake of the morning breakfast, you will start for the guided tour to Leh from Nubra Valley. Before that you will visit the Sumoor and Panamic hot sulphur springs. Once you reach Leh, you will check-in the prescribed hotel and stay overnight post dinner!

DAY 6 : Leh to Pangong Lake

After you have the morning breakfast, you will start with your amazing visit to the Pangong Lake and en-route on the drive you will witness the Changla Pass that is elevated at a height of 5486 m from where you can enjoy the beautiful views of the villages followed by the pass halt at Tsoltak. Once you arrive in Durbuk, you will take a short drive to the Western shore of the lake. Post reaching Pangong Lake, check-in the hotel or campsite and stay overnight after dinner.



DAY 7 : Pangong Lake to Leh

Eat the morning breakfast and start with a landscaped drive to Leh back on a drive after you explore the place. The natural landscape is admirable and traps you in the place for the sceneries it keeps. Post lunch, you will reach Leh and spend the evening at shopping for souvenirs and stay overnight once you reach the hotel and check-in.

DAY 8 : Departure from Leh

Depart to airport for onward destination. Fly with sweet memories.





INCLUSIONS

- 07 Nights Accommodation in 4 Star Hotel on Twin / Double Sharing Basis
- Assistance upon arrival at Leh airport with welcome in the Hotel
- Airfare / train fare.
- Daily Breakfast & Dinner.
- An air-conditioned car for sightseeing and excursions as per itinerary
- Currently applicable hotel taxes

EXCLUSIONS

- Any meals other than those specified in 'Cost Includes'
- Expenses of personal nature such as tips, telephone calls, laundry, liquor etc.
- Any other item not specified in 'cost includes'.
- GST 5% on total billed amount
- Guide & Entrance fees during sightseeing / Boat Safari
- High Season / Festive Season
- Supplements Applied by Hotels From Time to Time

TERMS AND CONDITIONS

ALL ABOVE OFFERS DOES NOT INCLUDE:

- Any Services not mentioned above
- The above quote is valid for 4 passengers travelling together
- Any peak season Surcharges
- Any increase in Airfare, Airport Taxes, Fuel Surcharge
- All kind of tips to drivers, guides, representative
- Any expenses of personal nature such as laundry expenses, wines, mineral water, food and drinks not in the regular menus provided by us.
- Meals are preset and a choice of menu is not available.
- Any increase in rate of exchange leading to an increase in surface transportation and land arrangements which may come into effect later
- The tour price is subject to increase without notice substantially prior to departure
- We are not responsible for visa rejection or delay due to any reason

travelPaa

(a unit of PANKAJ TRAVELS Corp.)

Address : 2, 1st Floor, Raghshree Market, Ajmeri Gate, Delhi -110006

Contact : +91 (11) 40224949 / +91 9968886111 / +91 9899921532

Email : sales@travelpaa.com



CONTACT US

Tour Manager : Arjav Jain

(+91-996888111)

sales@travelpaa.com

